

THE
LANCASTERS

HYDE PARK

Two Bedroom Apartment



The Lancasters was originally an elegant parade of 15 magnificent stucco-fronted Grade II listed houses dating from the mid nineteenth century. London's leading team of developers, architects and interior designers have created a unique fusion of traditional architecture with brand new design and construction.

Facing Lancaster Gate and occupying the ground and ground mezzanine floors is a 1,098sqft two bedroom apartment with a private entrance. Specification includes a contemporary Poliform Kitchen with Miele appliances, fully tiled marble bathrooms, underfloor heating, comfort cooling and whole house ventilation system. The apartment has a Lutron® lighting system installed and is prewired for a state of the art audio/visual system.





Show Apartment Interior



Bathroom



Show Apartment Interior

Two Bedroom Apartment

Floorplans and dimensions given for apartment 89/2

Total Internal Area

sq m	sq ft
102.0	1,098

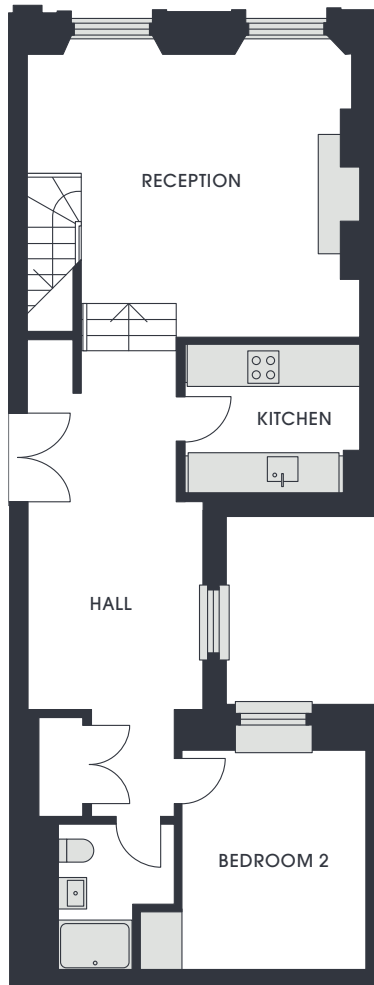
Room Dimensions

	m	ft
Hall	2.7 x 5.0	8.9 x 16.4
Reception	3.6 x 4.5	11.8 x 14.8
Kitchen	2.5 x 2.4	8.2 x 7.9
Master Bedroom	4.2 x 2.7	13.8 x 8.9
Bedroom 2	2.9 x 3.4	9.5 x 11.2

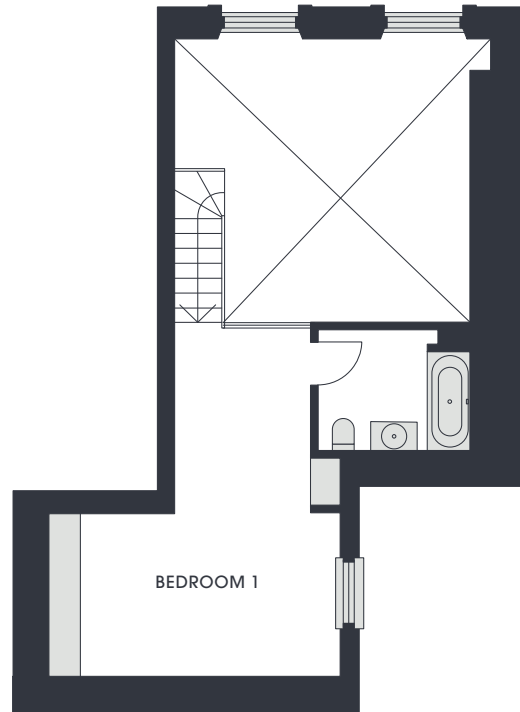
Ceiling Heights

	m	ft
Reception	4.18	13.7
Dining	2.30	7.5
Kitchen	2.30	7.5

Ground Floor



Ground Floor Mezzanine



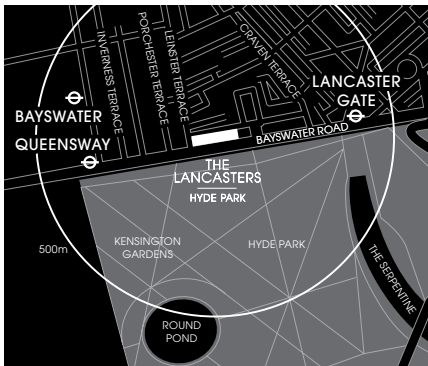
These particulars do not form part of any offer or contract and must not be relied upon as statements or representations of fact. These are illustrations to show the layout of the accommodation only. Any areas, measurements or distances are approximate.



Swimming Pool



Gymnasium



The Lancasters
75-89 Lancaster Gate,
London W2 3NH
sales@thelancastershydepark.com
Phone +44 (0)20 7402 8822
www.thelancastershydepark.com

Nearest Tube Stations:
Lancaster Gate or Queensway

Please note the entrance to The Lancasters is off
Leinster Terrace and there is no access to Leinster
Terrace directly from Bayswater Road.



Appointed Sales Agents for The Lancasters
Appointed Sales Agents for The Lancasters