

THE
LANCASTERS

HYDE PARK

Three Bedroom Lateral Apartment



Show Apartment Interior

The Lancasters was originally an elegant parade of 15 magnificent stucco-fronted Grade II listed houses dating from the mid nineteenth century. London's leading team of developers, architects and interior designers have created a unique fusion of traditional architecture with brand new design and construction.

This unique third floor, three bedroom apartment spans across four of the original houses. The apartment benefits from two set back terraces overlooking Lancaster Gate and a total of twelve floor to ceiling windows overlooking Hyde Park. Specification includes a contemporary Boffi Kitchen with Gaggenau and Miele appliances, fully tiled marble bathrooms, underfloor heating, comfort cooling and whole house ventilation system. The apartment has a Lutron® lighting system installed and is prewired for a state of the art audio/visual system.





Show Apartment Interior



Show Apartment Interior



Show Apartment Interior

Three Bedroom Lateral Apartment

Floorplans and dimensions given for apartment 87/9

Total Internal Area

sq m	sq ft
355.3	3,824

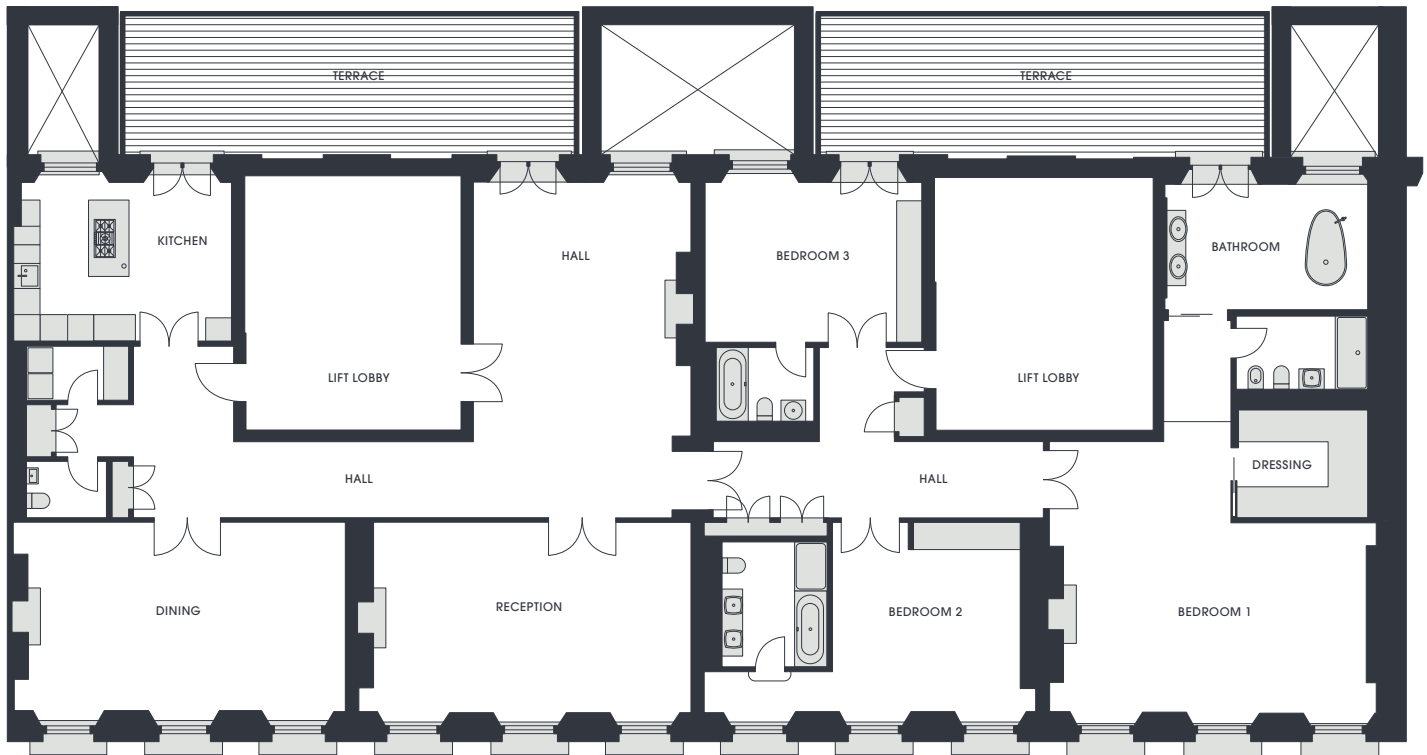
Room Dimensions

	m	ft
Reception	7.6 × 4.5	24.9 × 14.8
Dining	7.6 × 4.5	24.9 × 14.8
Kitchen	5.2 × 3.8	17.1 × 12.5
Master Bedroom	7.3 × 4.5	23.9 × 14.8
Dressing	3.1 × 2.5	10.2 × 8.2
Bedroom 2	4.5 × 3.9	14.8 × 12.8
Bedroom 3	4.6 × 3.8	15.1 × 12.5

Ceiling Heights

	m	ft
Reception	2.78	9.1
Dining	2.78	9.1
Kitchen	2.66	8.7
Master Bedroom	2.78	9.1

Third Floor



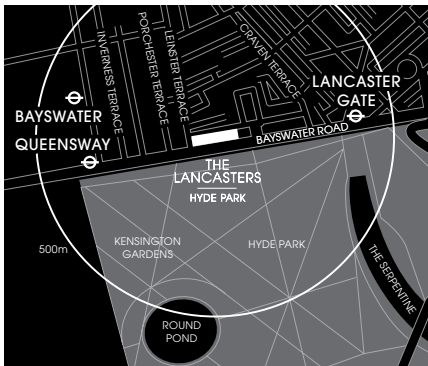
These particulars do not form part of any offer or contract and must not be relied upon as statements or representations of fact. These are illustrations to show the layout of the accommodation only. Any areas, measurements or distances are approximate.



Swimming Pool



Gymnasium



The Lancasters
75-89 Lancaster Gate,
London W2 3NH
sales@thelancastershydepark.com
Phone +44 (0)20 7402 8822
www.thelancastershydepark.com

Nearest Tube Stations:
Lancaster Gate or Queensway

Please note the entrance to The Lancasters is off Leinster Terrace and there is no access to Leinster Terrace directly from Bayswater Road.



Appointed Sales Agents for The Lancasters