

THE
LANCASTERS

HYDE PARK

Three+ Bedroom Apartments (2nd Floor)



Show Apartment Interior

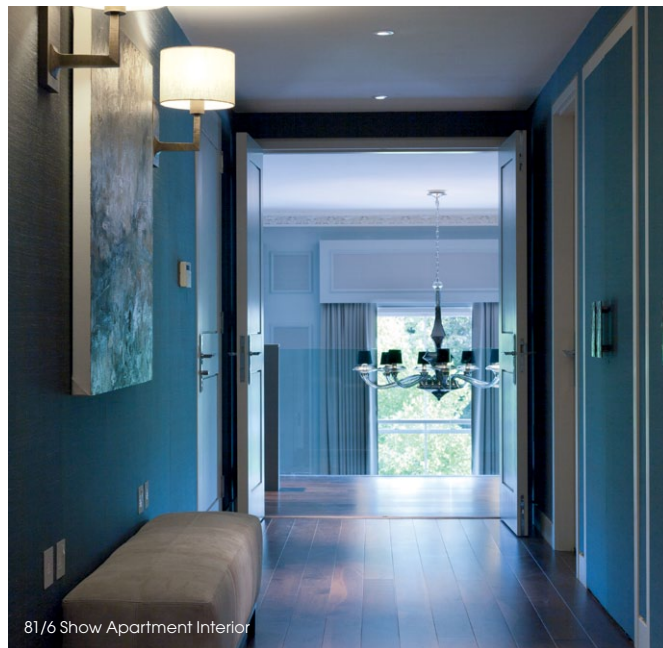
The Lancasters was originally an elegant parade of 15 magnificent stucco-fronted Grade II listed houses dating from the mid nineteenth century. London's leading team of developers, architects and interior designers have created a unique fusion of traditional architecture with brand new design and construction.

Located on the 2nd and 2nd mezzanine floors both the reception room and master bedroom of these apartments have 4.8m high ceilings and original architectural detailing. The apartments benefit from southerly views over Hyde Park. Specification includes a contemporary Poliform Kitchen with Gaggenau and Miele appliances, fully tiled marble bathrooms, underfloor heating, comfort cooling and whole house ventilation system. The apartments have a Lutron® lighting system installed and are prewired for a state of the art audio/visual system.





81/6 Show Apartment Interior



81/6 Show Apartment Interior



81/6 Show Apartment Interior

Three+ Bedroom Apartments (2nd Floor)

81/6*, 83/6, 87/7, 89/6

*Floorplans and dimensions given for apartment 81/6

Individual detailed floorplans available for all other apartments on request

Total Internal Area

	sq m	sq ft
	262.5	2,826

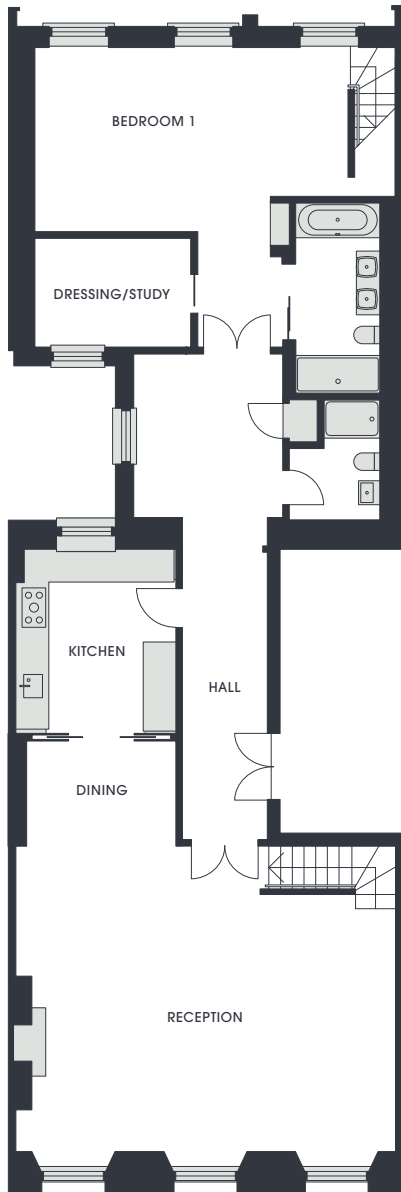
Room Dimensions

	m	ft
Reception	8.0 × 5.5	26.2 × 18.0
Dining	3.5 × 4.0	11.4 × 13.1
Kitchen	3.6 × 3.8	11.7 × 12.4
Master Bedroom	6.5 × 3.8	21.3 × 12.5
Dressing Room	7.5 × 1.0	24.6 × 3.2
Bedroom 2	5.0 × 4.8	16.4 × 15.7
Bedroom 3	3.0 × 3.1	9.9 × 10.3

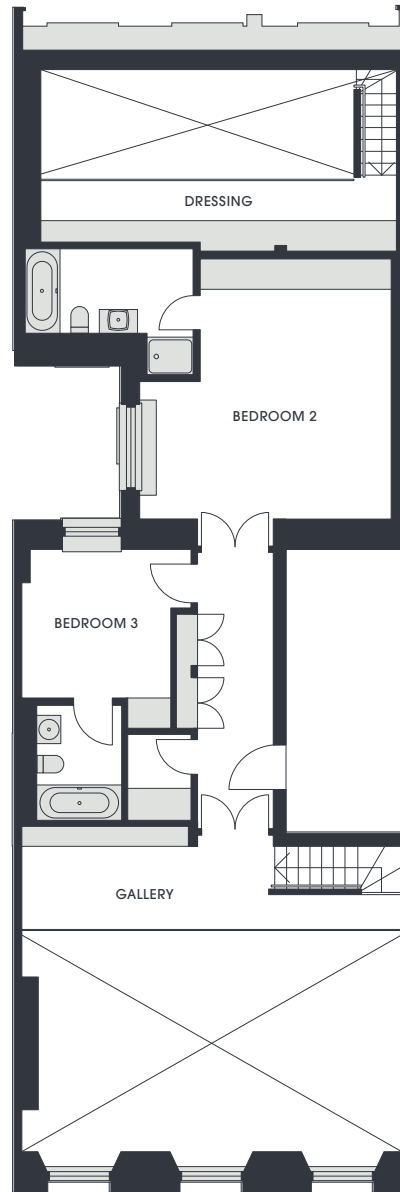
Ceiling Heights

	m	ft
Reception	4.83	15.8
Kitchen	2.33	7.6
Master Bedroom	4.83	15.8

Second Floor



Second Floor Mezzanine



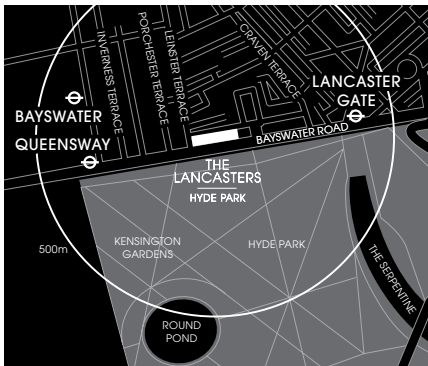
These particulars do not form part of any offer or contract and must not be relied upon as statements or representations of fact. These are illustrations to show the layout of the accommodation only. Any areas, measurements or distances are approximate.



Swimming Pool



Gymnasium



The Lancasters
75-89 Lancaster Gate,
London W2 3NH
sales@thelancastershydepark.com
Phone +44 (0)20 7402 8822
www.thelancastershydepark.com

Nearest Tube Stations:
Lancaster Gate or Queensway

Please note the entrance to The Lancasters is off Leinster Terrace and there is no access to Leinster Terrace directly from Bayswater Road.



Appointed Sales Agents for The Lancasters