

THE  
LANCASTERS

---

HYDE PARK

Four Bedroom Apartment



Show Apartment Interior

The Lancasters was originally an elegant parade of 15 magnificent stucco-fronted Grade II listed houses dating from the mid nineteenth century. London's leading team of developers, architects and interior designers have created a unique fusion of traditional architecture with brand new design and construction.

Located on the 2nd and 2nd mezzanine floors this imposing 5,217sqft apartment has a grand 15m reception room with a 4.8m high ceiling and original architectural detailing. The apartment also benefits from southerly views over Hyde Park. Specification includes a contemporary Boffi Kitchen with Gaggenau and Miele appliances, fully tiled marble bathrooms, underfloor heating, comfort cooling and whole house ventilation system. The apartment has a Lutron® lighting system installed and is prewired for a state of the art audio/visual system.





Show Apartment Interior



Show Apartment Interior



Show Apartment Interior

## Four Bedroom Apartment

Floorplans and dimensions given for apartment 87/8

### Total Internal Area

sq m	sq ft
<b>484.7</b>	<b>5,217</b>

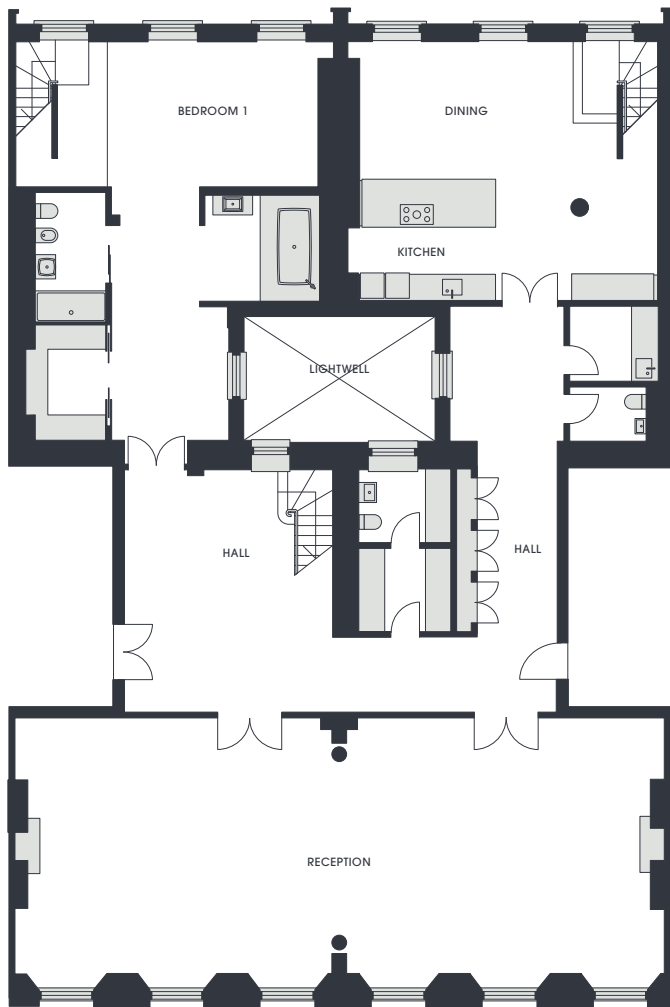
### Room Dimensions

	m	ft
Reception/Dining	15.5 × 6.3	50.9 × 20.7
Kitchen	6.4 × 6.5	21.0 × 21.3
Master Bedroom	6.5 × 3.6	21.3 × 11.8
Dressing Room	2.0 × 2.9	6.5 × 9.5
Bedroom 2	4.8 × 4.7	15.7 × 15.4
Bedroom 3	4.5 × 3.6	14.8 × 11.8
Bedroom 4	3.1 × 3.3	10.2 × 10.8

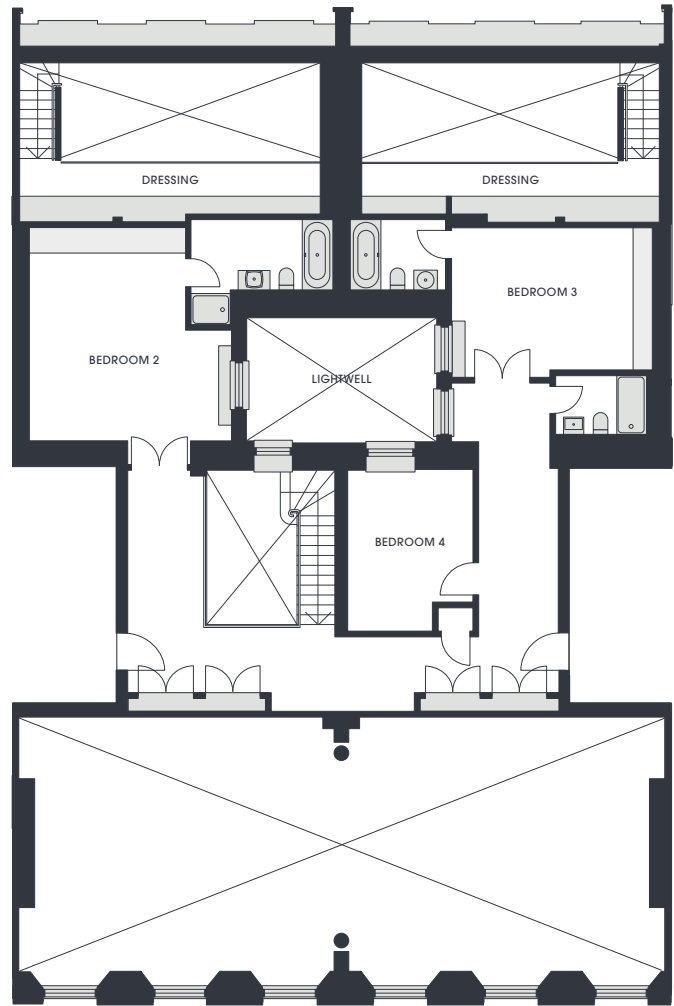
### Ceiling Heights

	m	ft
Reception	4.83	15.8
Dining	4.83	15.8
Master Bedroom	4.85	15.9

Second Floor



Second Floor Mezzanine



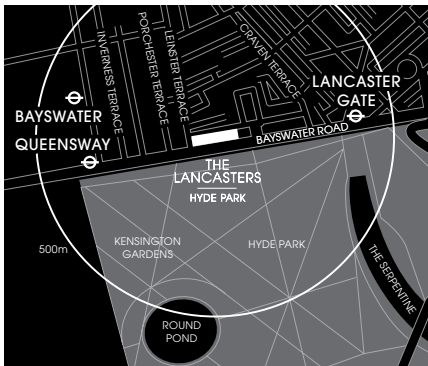
These particulars do not form part of any offer or contract and must not be relied upon as statements or representations of fact. These are illustrations to show the layout of the accommodation only. Any areas, measurements or distances are approximate.



Swimming Pool



Gymnasium



The Lancasters  
75-89 Lancaster Gate,  
London W2 3NH  
[sales@thelancastershydepark.com](mailto:sales@thelancastershydepark.com)  
Phone +44 (0)20 7402 8822  
[www.thelancastershydepark.com](http://www.thelancastershydepark.com)

Nearest Tube Stations:  
Lancaster Gate or Queensway

Please note the entrance to The Lancasters is off  
Leinster Terrace and there is no access to Leinster  
Terrace directly from Bayswater Road.



Appointed Sales Agents for The Lancasters